



# WESTFIELD WEEKLY

8<sup>th</sup> March 2024

Edition 23

## Key Dates

### DATES FOR YOUR DIARY

#### **Saturday 9<sup>th</sup> March**

- Bridgewater Cross County Event – Years 3 to 6

#### **Wednesday 13<sup>th</sup> March**

- Nursery Parent Tour – 9am

#### **Thursday 14<sup>th</sup> March**

- Year 3 & 4 Chorister Project – St Albans Cathedral

#### **Friday 15<sup>th</sup> March**

- RockSteady Concert – 9am
- Red Nose Day

### Advance Notice ....

#### **Monday 18<sup>th</sup> to Friday 22<sup>nd</sup> March**

- Year 6 Residential to Osmington Bay

#### **Tuesday 19<sup>th</sup> March**

- Easter Trail at Northchurch Baptist Church – Years 1 to 5

## A message from Miss Leach...



Firstly I have to acknowledge the hard work and AMAZING costumes that were on display for World Book Day - what a treat to celebrate such a great day with fabulous costumes and books! Thank you to the parents and staff for making this an extra special day for the children.

We have included within this newsletter some of the actions that we have either completed or are working on from the communications survey that you took part in - we have made a good start with this and you will see changes in the coming months.

Have a good weekend,  
Miss Leach

# LEADERSHIP CORNER



## A message from Mrs Goodchild

Over the last few months we have been reviewing and rewriting our school behaviour policy. The policy has been written in line with the advice from Therapeutic Thinking (STEPS) which is what our approach to behaviour is based upon. The policy has now been ratified by the governors and is ready to be shared with staff, children and parents. Since January, we have been implementing elements of the new policy. We have held assemblies and class discussions with the children to focus upon the pro-social behaviours we expect to see in school as well as discussing the impact and consequences of anti-social choices upon ourselves and others within our school community. Below I have detailed a few of the changes however please read the policy for further information.

## What is pro-social behaviour?

At Westfield we acknowledge that positive experiences create positive feelings, and that in turn, positive feelings create positive behaviour. Staff will model positive relationships and interactions, use positive phrasing with the children and spend time with children to support them in making positive behaviour choices – that result in pro-social behaviour - where required.

Pro-social behaviours are any actions which benefit the individual and others around them, such as:

- Acknowledgement of own feelings
- Identify, understand and accept mistakes as learning opportunities, and use a Growth Mindset to persevere and challenge themselves to complete difficult tasks
- Identify, reflect and repair anti-social behaviour choices
- Respect for their right and the rights of others to learn, and their responsibility to ensure their behaviour choices don't negatively impact upon this

## Tiered Approach

To support all learners in the classroom, the following tiered approach is followed.

SUMMER	
Step 1	Positive reminder about the expectation. May include a visual cue.
Step 2	Verbal warning given. Use of positive phrasing with reminder of expectation including what the consequence will be.
Step 3	Consequence in class. Proportionate to the behaviour. Maximum 10 minutes. e.g. move station in classroom, time to reflect, lose work in own time.
Step 4	Rest. Positive level of behaviour expectations given. CONSEQUENCE IN ANOTHER CLASSROOM. Follow steps 1 - 4. Proportionate to the behaviour. Maximum 10 minutes. Log on CPOMS - behaviour seen and consequence given.
Step 5	Consequence involving senior leadership team. Follow steps 1 - 4. Consequence given involving the KS leader. Debrief held. Parents contact and follow up where necessary. Log on CPOMS - behaviour seen and consequence given.
Step 6	Consequence involving headteacher. Follow steps 1 - 4. Consequence given involving the head. Parents contact and follow up where necessary. Log on CPOMS - behaviour seen and consequence given.

## Get in Touch

We always welcome suggestions and work in a solution focused way.

Please get in touch:

[admin@westfieldprimary.herts.sch.uk](mailto:admin@westfieldprimary.herts.sch.uk)

## W1SPA News

W1SPA Reminders!

**FRI 15th March** - W1SPA Coffee and Tea Morning before the Rocksteady Concert

**FRI 22nd March** - Year 2 Cake Sale at Pick Up

W1SPA is planning events for the Spring - please do not hesitate to get in touch if you have ideas, comments, or suggestions. Together we can do great things for our kids!

Join our Facebook Group [www.facebook.com/groups/wispawestfield](https://www.facebook.com/groups/wispawestfield) or follow us on

Instagram [www.instagram.com/wispa\\_pta\\_group](https://www.instagram.com/wispa_pta_group) for all the latest.

## Attendance – Every day at school counts!

Attendance & Number of Late Arrivals: 26 <sup>th</sup> February – 1 <sup>st</sup> March 2024						
Reception	Year 1	Year 2	Year 3	Year 4	Year 5	Year 6
98.67%	96.55%	97.78%	90.42%	98.57%	88.57%	93.67%
3	10	1	8	4	3	6

**Our target is 95%. Being in school each day, if well, gives your child the best chance of learning and making good progress both educationally and socially. Please support the school by ensuring that your child attends school regularly and arrives ready to learn and on time. Thank you**

### Holidays and Absence in Term Time

Please can we remind you that holidays and absence during term time will not be authorised except in exceptional circumstances. Children with unauthorised absences, including holidays, and unexplained absences are at risk of receiving a Fixed Penalty Notice (FPN) from Hertfordshire County Council. A FPN is issued per parent, per child and is currently £60 per absence. The Department for Education have also recently announced that the fine will be increased to £80 per child, per parent, per absence from August 2024.

Term Dates are published on the school website and paper copies are available from outside the Office.

### Punctuality Matters!

Arriving on time for school is important as late arrivals are disruptive for the class and can be embarrassing for the child who is late. Children can also miss important information during registration. In addition to this the Office spend a large part of the morning signing late children into school when they could be better utilised working on other, sometimes vital areas of school life.

You may think that your child is only missing a few minutes in the morning but a pupil who is 10 minutes late every day, will miss over 31 hours of teaching during the year. That's a large number of teaching hours that cannot be replaced.

Children can arrive at school from 8:35am with school starting at 8:50am. The gates close at 8.50am, by this time all children should be in class. Late arrival is between 8:50am and 9:10am. Arrival after 9:10am is recorded as unauthorised.

## Red Nose Day – Friday 15<sup>th</sup> March

On Friday 15th March, it is Red Nose Day and we are inviting all the children to wear something red and bring in a donation for the charity. Children are not expected to wear school uniform and can wear anything from a pair of red socks, a red hair accessory to a full outfit in red! Thank you for your support.

## Uniform – PL Schoolwear

Our uniform supplier, PL Schoolwear, are switching over to a new system and conducting a stock take from 5pm today until 9:30am on Wednesday 13<sup>th</sup> March. Please note that whilst the switch over is taking place, their Aylesbury and Hemel Hempstead stores will be closed for orders and collections. We apologise for any inconvenience during this period.



## Parent Communication Survey

Thank you for supporting the school with our communications survey. It has been very helpful for us to canvas your views and to prioritise appropriate actions. Please see below an outline of what actions we have already taken and intend to take as a result of your comments and views.

As ever, we are keen to improve every aspect of what we do and this is just the very start so we will keep you posted with updates and changes as they happen. Thank you once again for the time and consideration you gave to this survey.

Area of Communication	You Said ...	We Did / Planned Actions
Teacher	Would like weekly Communication with Teacher re learning that week, how child is progressing, areas of support  Receive information more frequently on your child's academic performance	Looking at teacher-friendly ways of sharing updates  Small working group of staff to be set up to find practical solutions
Headteacher	Would like more communication from Headteacher about plans, priorities and school vision going forward	Introduced Headteacher / Leadership News on Westfield Weekly  Headteacher half-termly newsletter to be introduced
Governor	Would like more information and communication from the Governing Board	Communication survey shared with Chair of Governors to review and action
Parent Reps / Parent Forum	Clarification requested of the parent rep role and purpose of the forum	Mrs Goodchild to share and clarify the roles of reps and purpose of forum  We are working on the agenda for our next Parent Forum with reps and will provide further information going forward
Open Learning Mornings & Child Shows Parent	More information requested about the events – when/where/focus etc.  Need more flexible options for parents to attend	Staff considering how to amalgamate these events and the format and timings of the events with more detailed information provided ahead of the events
Westfield Weekly	Option to have Westfield Weekly online	We are looking into online options with fewer and more effective means of communication
Website	Parents not aware of the information available on the website	Website to be upgraded initially to ensure any redundant information removed with full redesign to follow.

## Nursery Admissions for September 2024

**Applications for Nursery admissions starting in September 2024 opened on Monday 26<sup>th</sup> February 2024.**

If you have a child who is born from 1st September 2020 to 31st August 2021 or know of someone who has a child of this age, applications can be made to join our Nursery in September 2024 via our school website <https://westfieldprimary.herts.sch.uk/our-school/admissions/>. **The deadline for applications is 28<sup>th</sup> March 2024.**

We will also have a tour taking place on Wednesday 13<sup>th</sup> March if you would like to come and find out all about our Early Years provision from September 2024. Please contact the school office at [admin@westfieldprimary.herts.sch.uk](mailto:admin@westfieldprimary.herts.sch.uk) or 01442 862729 to book.

## Bridgewater Cross Country Event – Saturday 9<sup>th</sup> March

We are looking forward to seeing lots of children at the annual Bridgewater School Cross Country on **Saturday 9<sup>th</sup> March 2024**. Below are the race times. Please arrive at least 10 minutes before the race - all children must be accompanied by an adult for their time there and can leave immediately after.

Race times:

<b>Time</b>	<b>Race</b>	<b>Approximate Distance</b>
9.30	Year 6 Girls	(1200m)
9.45	Year 6 Boys	(1200m)
10.00	Year 5 Girls	(1200m)
10.15	Year 5 Boys	(1200m)
10.30	Year 4 Girls	(800m)
10.45	Year 4 Boys	(800m)
11.00	Year 3 Girls	(600m)
11.15	Year 3 Boys	(600m)

11.35 (approx.) Presentation

Medals for the first 3 individuals in each race and the first three teams – the first 3 pupils to finish from each school will count in the team.

A map of the site including the route is attached.

### **Cost**

There is an entry fee of £2 per runner.

### **Clothing**

Children should wear appropriate clothing for the course and weather conditions – it is likely to be muddy! Running spikes/football boots **are** allowed to be worn but please remove muddy football boots and spikes when entering a school building or when crossing the playground.

### **Toilets**

Toilets will be signposted at the back of the school building.

### **Parking**

Parking will be in the car park and on the playgrounds, please follow the parking marshals instructions. **Please be aware that parking is limited**, please consider car sharing or parking a distance away and walking. **Please do not double park on the road by the school as this is a bus route and needs to be kept clear.** The school travel rules are attached.

### **Refreshments**

Refreshments will be on sale - card payments are accepted.

## Herts Music Service – Financial support for instrument lessons

Families facing financial difficulty are able to apply for financial support from Hertfordshire Music Service for instrument lessons. The application can only be made for children in Year 3 and above. Funding is available for eligible families at 50% and 100%. If you would like to know more, please visit: [Help with music fees \(hertsmusicservice.org.uk\)](https://hertsmusicservice.org.uk) Any questions, please email: [music.remission@hertfordshire.gov.uk](mailto:music.remission@hertfordshire.gov.uk)

## Wellbeing and Parenting Information

### Dr Kathy Weston Newsletter

Dr Kathy Weston's Newsletter this week 'Reflect' looks at the benefits of sport/physical exercise and how we can support and talk to our children about puberty:

<https://members.tooledupeducation.com/wednesday-wisdom/sporty-saturdays>

### BeeZee Bodies – FREE Healthy Lifestyle Programme

BeeZee Families are running a FREE healthy lifestyle programme from 22<sup>nd</sup> April 2024 to help families to build healthy habits around food and physical activity. Online programmes are also available now. For more information and to sign up, please visit their website: [beezeebodies.com/programs/beezee-families](https://beezeebodies.com/programs/beezee-families)

### Families First News

Just Talk invites children, young people, parents, carers and schools to get involved, to help children and young people experience the benefits of small changes to their everyday lives. Hertfordshire's Young People's Health and Wellbeing Survey (YPHWS) 2022 revealed that 23.8% of young people in Hertfordshire 'do nothing' as one of their coping mechanisms when something worries them. Just Talk's challenge aims to motivate Hertfordshire's children and young people to incorporate small daily activities into their daily routines, to improve their mood and discover healthy emotional outlets.

Running from 26 February to 18 March, the campaign will highlight small, mood-boosting activities and positive wellbeing messages. Challenges for families and young people will encourage participants to undertake simple yet effective tasks each day to boost their mood and wellbeing.

Visit [The Power of Small Changes \(justtalkherts.org\)](https://justtalkherts.org) for full details and how to get involved. If you have any questions, please E: [justtalk@hertfordshire.gov.uk](mailto:justtalk@hertfordshire.gov.uk). For more information about Just Talk visit [www.justtalkherts.org](https://www.justtalkherts.org)

## Local Events and Information

### Hemel Storm Basketball

Storm have another home match this Saturday (9<sup>th</sup> March) at Hemel Leisure Centre at 7pm vs Derby Trailblazers. Tickets available online at [www.stormbasketball.net](https://www.stormbasketball.net) or on the night.

### Berkhamsted Medieval Festival

Date for your diary - Berkhamsted Chamber of Commerce Committee is organising a second Medieval Festival on the 25<sup>th</sup> and 26<sup>th</sup> of August 2024. There will be battle re-enactments, falconry displays, axe-throwing, a fire-eater, magician, juggler, food, ice cream and lots more. More details to follow.

### Learn to Balance and Ride

Learn to Balance and Ride (L2BR) and Developing Better Bike Control (DBBC) courses will be held at **Tudor Primary School in Hemel Hempstead** on **Tuesday April 2<sup>nd</sup> and Wednesday April 3<sup>rd</sup>**. Courses are also being run over Easter in Watford, Welwyn Garden City and Harpenden. The courses are suitable for children from three and a half to teenage and the courses are an ideal opportunity to learn to ride a bike in a safe and supportive environment.

Prices have risen slightly this year at **£34** for the recommended two sessions and **£21** for one. The price includes provision of a balance bike, quality lightweight pedal bike and a helmet for each child. Sessions are one hour in duration with a maximum of 5 children per session. For more information and to book, please visit: [Public Schedule & Booking – Hertsbalance](#).

### Game On Easter Programme

Game On have a full programme of events this Easter including Football, Street Dance and Multi sports courses. More info can be found at: [www.gamesonsportscoaching.co.uk](https://www.gamesonsportscoaching.co.uk)

They are also holding **free football trials** over the holidays. Game On run an advanced weekly football session run by their FA qualified coaches and it provides a great opportunity for those children who are excelling in either their school or grassroots club to receive additional coaching. Please visit their website detailed above for more information.

### Letters/Flyers/Information sent home this week

- Year 6 Leavers Book
- Year 6 PGL Residential Presentation
- Years 3 & 4 Chorister Project
- Year 5 Staff Update (Spring Term)

Copies of all letters sent home can be found in the letter rack outside the office and can also be accessed from our website within the '[Letters Home](#)' page

**Our School Value this half term is ..... Honesty**

## Travel / Parking at Bridgewater Primary School

Berkhamsted, HP4 1ES For SATNAV users - **please use postcode HP4 1BS**



Bridgewater Primary School is situated in a residential area. Please be considerate of our neighbours by travelling and parking in accordance with this guidance.

### Please DO:

1. Walk / cycle to the school wherever possible.

2. If you need to drive, please car share if possible. You can park in the school car park, following the marshals' instructions.

- Go in through the main school gates.
- Turn right, down the slope to the car park.
- Park in rows to allow ease of arrival / departure for other visitors.

**Please DO NOT park on the road** outside our neighbours' homes.

3. Follow the one-way system. Please go up Haynes Mead and down Bridle Way (see the attached map).

Buses and emergency vehicles cannot get through if cars park on both sides of the road or try to pass both ways.

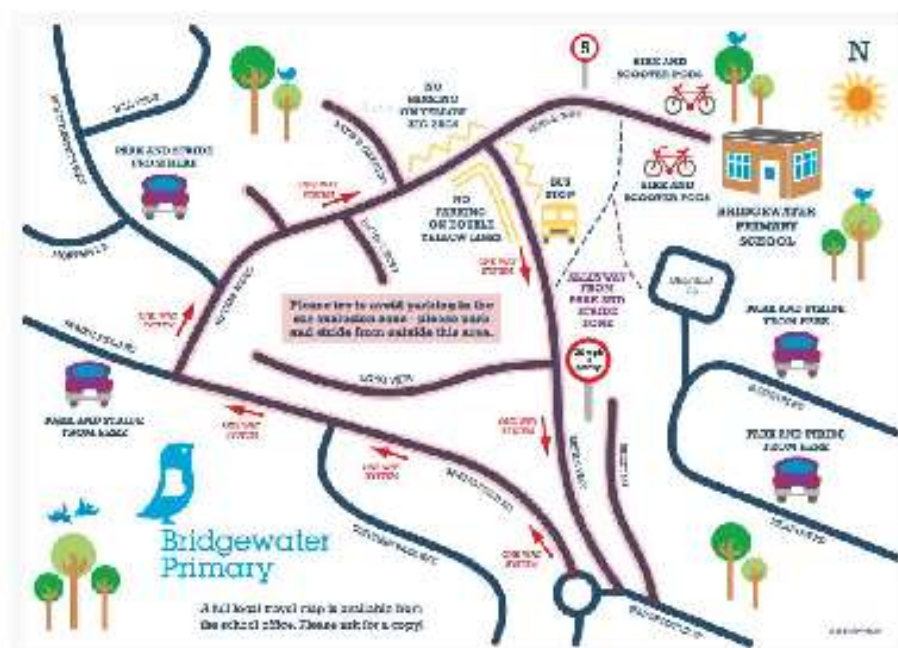
### Please DON'T park on the road and especially not on the:

- yellow zigzags / double yellow lines
- pavements
- grass verges
- entrances to driveways

### Whilst you are at the school please note

- There is no smoking or vaping on the site
- Dogs are not allowed on the site (assistance dogs excepted)
- Children must not use the outdoor gym equipment in the playground

Thank you for your help.





# Map of Facilities/Course



Recording/Scoring



First Aid



Refreshments



Toilets



Car Parking

Course Details

Yr 5 & 6 - Twice round course

## Would you like your child to make some healthy sweet swaps?



Sidra Hussain,  
Beezee Families Nutritionist

### We are here to help!

Our free healthy lifestyle programme can support families like yours make healthy habits. Help yourself to our sweet tips below.

1. Create a shopping list for the family, before going shopping.
2. Have a weekly sweet voucher. Your children choose when to "cash in" for a portion of sweets.
3. Use the **NHS Food Scanner** app to help find healthy swaps in the shops.
4. Try having a mix of fresh and dried fruits to help the sweet cravings, i.e. dried mango, bananas.
5. Remember to have dried fruits in small amounts as the sugar is more concentrated.
6. Mix things up and make fruit more fun - try making fruit cocktails, smoothies or ice lollies.
7. Look for healthy sweet treat recipes online. We might be biased but we think [beezeebodies.com/blog/category/recipes](https://beezeebodies.com/blog/category/recipes) is pretty good!

**Beezee  
Families**



24-0513

Like these tips and want to know more?  
Check out our website now.

\*Our courses are for families with children aged 5+.

Scan the code

...or click here  
to find out more

Sign up today!







## LEARN TO BALANCE AND RIDE AND DEVELOPING BETTER BIKE CONTROL COURSES (MARCH AND EASTER 2024)



One of the best skills children can learn, opening up opportunities for fun, independence, activity and health for a lifetime

### LEARN TO BALANCE AND RIDE (L2BR)

- For children typically aged between 3.5 and 11
- 80% + of children are normally riding after 2 sessions
- 1 instructor to max 5 children
- Balance bike and lightweight pedal bike for each child included in price
- 1 hour sessions

### DEVELOPING BETTER BIKE CONTROL (DBBC)

- Follow-on course for new or inexperienced riders
- Covers key skills of starting, stopping, turning, looking, riding close to others, gears and signalling
- 1 instructor to max 5 children
- Bike provided if required (extra £3.00)
- 1 hour sessions

Full course details at: [www.hertsbalance.uk/course-descriptions](http://www.hertsbalance.uk/course-descriptions)

**Saturday March 23<sup>rd</sup> and Sunday March 24<sup>th</sup>**

**Venue:** Cassiobury Junior School, **Watford.** WD17 3PD

**Tuesday April 2<sup>nd</sup> and Wednesday April 3<sup>rd</sup>**

**Venue:** Tudor Primary School, **Hemel Hempstead.** HP3 9ER

**Thursday April 4<sup>th</sup> and Friday April 5<sup>th</sup>**

**Venue:** The Ridgeway Academy, **Welwyn Garden City.** AL7 2AF

**Monday April 8<sup>th</sup> and Tuesday April 9<sup>th</sup>**

**Venue:** Cassiobury Junior School, **Watford.** WD17 3PD

**Thursday April 11<sup>th</sup> and Friday April 12<sup>th</sup>**

**Venue:** Roundwood Primary School, **Harpenden.** AL5 3AD

**Cost: £34 for two sessions. £21 for one session.**

For more information and to book, go to [www.hertsbalance.uk/public-schedule-booking](http://www.hertsbalance.uk/public-schedule-booking)  
email [phil@hertsbalance.uk](mailto:phil@hertsbalance.uk) or call **Phil** on 07941 061717.

Private L2BR, DBBC and Bikeability sessions are available for children and adults and families. Details at [www.hertsbalance.uk/private-sessions](http://www.hertsbalance.uk/private-sessions)



Please come and join us for a

# Cuppa & a catch up

Are you a SEND parent/carer?

What can I do to support my child?

Who can I go to, to get support?

How can school and I work together to best support my child?

Come & have a chat with a friendly face  
from Dacorum Family Support & let's  
see how we can help.



Westfield Primary School  
Thursday 18<sup>th</sup> April 2024  
9.00-10.00 am





# SPORTS COURSES THIS EASTER

DAILY COURSES THROUGHOUT THE HOLIDAY  
9 AM - 3 PM AT VARIOUS SCHOOL VENUES

SPORTS  
INCLUDE:  
FOOTBALL,  
STREET DANCE,  
BASKETBALL,  
DODGEBALL &  
HOCKEY

EASTER  
EGG HUNT  
+  
FREE  
GAME ON GIFT  
FOR ATTENDING  
2+ DAYS

JUST £22 PER DAY

DISCOUNTS FOR SIBLINGS & MULTIPLE DAY BOOKINGS

FOR FULL DETAILS OF ALL THE COURSES &  
HOW TO BOOK PLEASE SEE OVERLEAF

[www.gameonsportscoaching.co.uk](http://www.gameonsportscoaching.co.uk)  
01923 218124

**Game On**  
Sports Coaching

## COURSE DATES AND VENUES

School Venue	Dates	Course
Aylesbury - St Mary's	4th & 11th April	Mini Olympics
Berkhamsted - Thomas Coram	2nd & 3rd April	Football
Berkhamsted - Thomas Coram	2nd & 3rd April	Street Dance
Buohy - Bromet	8th & 9th April	Football
Buohy - Bromet	8th & 9th April	Street Dance
Chart Edge - Chartbridge	2nd & 3rd April	Mini Olympics
Chesham - Westtown	8th & 9th April	Mini Olympics
Hemel Hempstead - Hollismere End	8th & 9th April	Football
Hemel Hempstead - Hollismere End	8th & 9th April	Street Dance
Stoke - Stoke Mandeville	3rd & 4th April	Mini Olympics
Tring - Bishop Wood	12th April	Street Dance
Watford - Coates Way	3rd & 4th April	Football
Watford - Highwood	9th & 10th April	Mini Olympics

## COURSE DETAILS

- Courses are open to all children in Years 1 to 6.
- Children can attend as many days as they wish.
- Mini-Olympics courses include: Basketball, Football, Dodgeball and Hockey.
- Football and Mini Olympics courses are outside so children need to wear appropriate clothing (e.g. tracksuit) and trainers. Footballers can wear boots and we strongly recommend shin pads.
- In the event of bad weather we will play indoors.
- All children need to bring a packed lunch & drink.
- During the lunchtime period we will have a tuck shop for the children's benefit.

## COSTS & PAYMENT DETAILS

1 Day = £22    2 Days = £42  
3 Days = £50    £5 per day thereafter

- All bookings will be made via our website. Upon receipt of your booking you will immediately receive a confirmation email and details on how to make payment.
- Siblings are welcome to take 10% off the total price when applying together.

### PRIZE

Any child who attends 2 or more days will receive a Game On Sports Bag or Waterbottle.

## HOW TO BOOK

To book your child's place please apply online at:  
[www.gameonsportscoaching.co.uk/holiday-courses](http://www.gameonsportscoaching.co.uk/holiday-courses)

Unit 54 The Wanta Business Centre  
Colne Way, Watford WD24 7ND  
01923 218124  
E: [info@gameonsportscoaching.co.uk](mailto:info@gameonsportscoaching.co.uk)  
W: [www.gameonsportscoaching.co.uk](http://www.gameonsportscoaching.co.uk)

**Game On**  
Sports Coaching

UNIT 54 THE WANTA BUSINESS CENTRE  
COLNE WAY, WATFORD WD24 7ND  
01923 218124  
[www.gameonsportscoaching.co.uk](http://www.gameonsportscoaching.co.uk)  
[info@gameonsportscoaching.co.uk](mailto:info@gameonsportscoaching.co.uk)

## JPL & Development Squad Trials

FREE TRIAL TO JOIN OUR SQUADS



Our Development Squad was set-up in 2013 to provide an opportunity for advanced players to receive specialist football coaching to further develop their natural ability and work alongside any grassroots teams that a child plays for. This season we have extended to include a JPL team, which we are looking to expand for next season. Since we started we have helped 33 players progress through to professional clubs academies.

Both trials are free of charge

### TRING - Development Squad

**WHEN:**  
Friday 12th April  
**WHERE:**  
Bishop Wood School  
(Frogmore Street, Tring, HP23 5AU)

**TIMING:**  
Years 1 to 8 - 9am to 12pm  
Those children who are successful in the trial would have the option to attend either Tring (Monday evenings) or Watford (Wednesday evenings) Development Centres.

### WATFORD - JPL Squad

We will be holding trials for next seasons squads for those children currently in Years 5 to 7. The trials will take place in Watford in May. Please email us for more details.

The JPL is a league that bridges the gap between grassroots football and the professional clubs. We train once a week and play matches every Saturday morning in Watford. We are looking for players who are excelling within their grassroots team, school team or our own Development Centres.

### Benefits of joining the Development Centre or JPL squads

- ★ Specialist advanced coaching from FA Qualified Coaches
- ★ Everyone receives a full Puma training kit
- ★ Option for specialist Goalkeeper coaching
- ★ Play matches against local academy teams or in the JPL League

To register your interest in attending the free trial session please email [info@gameonsportscoaching.co.uk](mailto:info@gameonsportscoaching.co.uk). Please include which trial you would like to attend (you can do both if in Years 5 to 7), your child's name, year group, school they attend, contact number and any medical conditions.



✓ FA Qualified Coaches  
✓ First-Aid Trained  
✓ DBS Checked



Official  
Game On  
Kit Supplier



## NEXT HOME GAME

# HEMEL STORM

VS

# DERBY TRAILBLAZERS

NBL Division One

## Saturday 9th March

### 7pm tip off

Hemel Hempstead Leisure Centre, HP1 1JS

Get your tickets online at [www.stormbasketball.net](http://www.stormbasketball.net)  
or at the ticket desk on the night

**Family\*: £30    Mini Family\*\*: £15**

**Adult: £10.50    u18: £6.00**

**Concessions: £8.00**

\*\* family ticket maximum 2 adults    \* mini family 1 adult & 1 u18

STORM BASKETBALL - NEXT HOME GAME



**vanarama**



[www.stormbasketball.net](http://www.stormbasketball.net)

[hemelstorm](https://twitter.com/hemelstorm)



Hemel Storm Basketball



[hemelstorm](https://www.instagram.com/hemelstorm)